

Beijing
北京

Smart Hero - Central Park Plaza
骏豪·中央公园广场

PRESENTATION
项目介绍



CENTRAL PARK
PLAZA

中央公园广场

骏豪·中央公园广场
项目介绍

Smart Hero - Central Park Plaza Presentation

CENTRAL PARK
PLAZA
中央公园广场



CENTRAL PARK
PLAZA

中央公园广场

城市山水向中国时代致敬

City Landscape, Tribute to the
China Era





骏豪·中央公园广场

Smart Hero - Central Park Plaza

世界顶级绿色建筑综合体

World's top green building complex

承袭中国至高哲学“天人合一”思想

Follow Chinese philosophy "harmony between man and nature"

打造“城市山水”大美画卷，创制时代地标

Create great picture of "Urban Landscape", be the times landmark

骏豪·中央公园广场

Smart Hero - Central Park Plaza

占地面积约34698平方米

Occupied Area: 34698 sqm

总建筑面积约22万平方米

Building Area: 220 000 sqm

涵盖超5A写字楼——世界级智能纯写

Involves five-star office building - world class intelligent buildings

企业独栋——全球总部级办公场所

Independent building for company, customized global headquarters

精品办公楼宇——企业定制级商务空间

Top quality office building, customized business space

精品商业——为圈层生活打造一站式购物场所

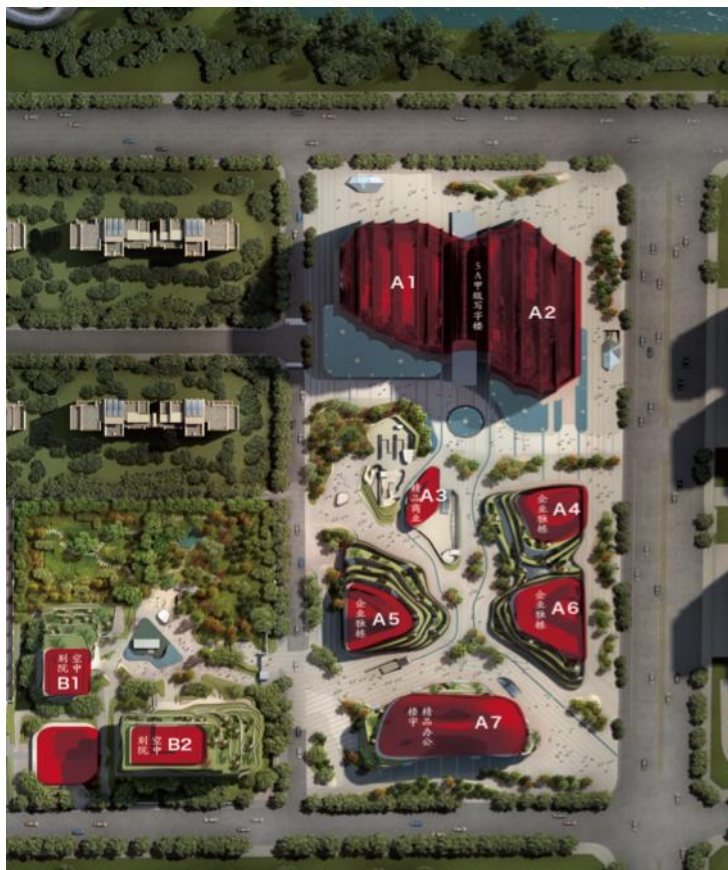
Top quality businesses, one stop shopping mall

ARMANI/CASA高端住宅等多种业态

Capital Residences by Armani/Casa

项目还未建成，即被评为中国当代十大建筑

Won the honorary title "Top 10 Contemporary Buildings in China" even before the project construction completion



中国新时代地标 New Landmark in China

楼座 Building	面积 (m ²) Area	定位 Orientation
A1	39431.54	超5A级写字楼 Five star office building
A2	43647.49	超5A级写字楼 Five star office building
A3	654.17	米其林餐厅 Michelin restaurant
A4	3092.13	艺术中心 Arts center
A5	5082.49	优翔国际 L'Avion International
A6	3641.90	京博集团 Chambroad Holding
A7	10305.87	精品办公, 已满租 Office building, rented over
B1、B2 (2栋) 2 buildings in total	22000	阿玛尼城市公寓, 共56席 Capital Residences by Armani/Casa, 56 units in total



三大公园环绕

Surrounded by three parks



朝阳公园
Chaoyang Park



团结湖公园
Tuanjiehu Park



红领中公园
Honglingjin Park



商圈介绍

Business districts

CBD商圈
CBD

燕莎商圈
Lufthansa

第三使馆区
3rd embassy
area

便捷交通 Traffic

距离首都机场约20分钟

20 min distance from Beijing International Airport

地铁14号线 (已开通) 无缝对接、M3 (已开工)

Subway Line 14 (in operation) and Line 3 (under construction)



美国LEED绿色建筑金级认证
US LEED Gold Level Certification by
Green Building Council



中国绿色建筑两星认证
Two star Certification by China Green
Building Label



中国办公写字楼白金五星认证
Platinum five-star certification with Office Building
Standard by Commercial Real Estate Committee of the
China Real Estate Association



2栋超5A甲级写字楼 2 five-star office buildings

总建筑面积约84000平方米，分为东西两塔

Building area intotal - approx. 84 000 sqm, consists of 2 towers in east and west

西塔A1:共26层,总建筑面积约 约40000平方米

Building A1 in west - 26 floors with total building area approx. 40 000 sqm

东塔A2:共27层,总建筑面积约 约44000平方米

Building A2 in east - 27 floors with total building area approx. 44 000 sqm

标准层面积区间约1800-2000平方米

Standard floor area - approx. 1800 - 2000 sqm



A1座基础信息 Info. of Office Building A1

A1高塔写字楼 Building A1	基础数据 Info.
总体量 Building Area	39431.54m ²
建筑高度 Building height	约120m approx. 120m
楼层数 Floors	B4-26F
标准层高 Standard story height	4.2m (部分楼层为4.5m), 净高2.8米 4.2m(4.5m for part floors), clear height 2.8m
大堂挑高 Lobby height	约30m approx.30m
电梯 Elevator	通力电梯8部, 分高低区 8 KONE elevators, floor high and low separated
24小时机房 Machine room 24 hour	提供24小时冷却水 cooling water 24 hour available
标准层面积 Standard floor area	约1800m ² approx. 1800 sqm
空调系统 Air conditioning	开利, VAV Carrier, VAV
供电配置 Electricity supply	双路供电、配后备电力设施 two circuit feeding, with backup power facilities
交付时间 Delivery date	现房随时入驻 Ready to move in at anytime
交付状态 Current situation	室内网络地板 Indoor net floor
租赁面积 Rental area	300平米起分割 minimum 300 sqm

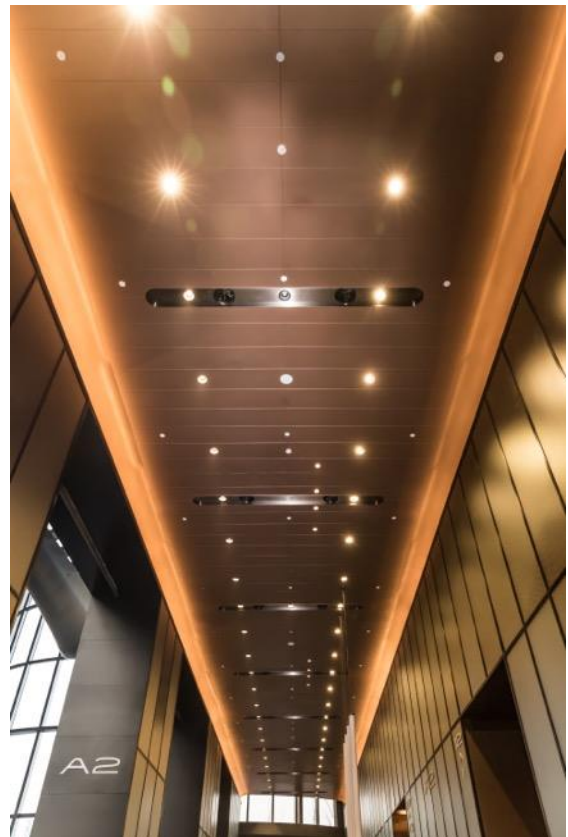
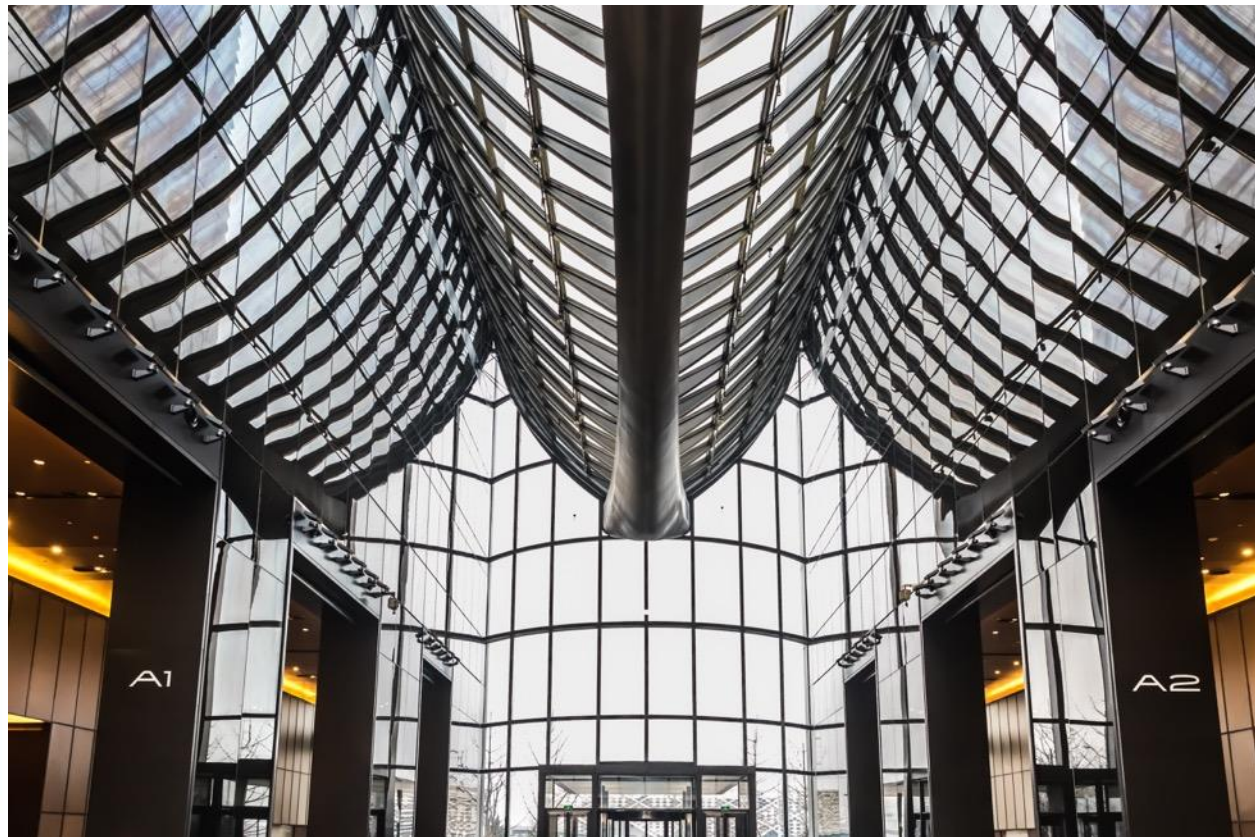


A2座基础信息 Info. of Office Building A1

A2高塔写字楼 Building A2	基础数据 Info.
总体量 Building Area	43647.49m ²
建筑高度 Building height	约126m approx. 126m
楼层数 Floors	B4-27F
标准层高 Standard story height	4.2m (部分楼层为4.5m), 净高2.8米 4.2m(4.5m for part floors), clear height 2.8m
大堂挑高 Lobby height	约30m approx.30m
电梯 Elevator	通力电梯8部, 分高低区 8 KONE elevators, floor high and low separated
24小时机房 Machine room 24 hour	提供24小时冷却水 cooling water 24 hour available
标准层面积 Standard floor area	约2000m ² approx.2000sqm
空调系统 Air conditioning	开利, VAV Carrier, VAV
供电配置 Electricity supply	双路供电、配后备电力设施 two circuit feeding, with backup power facilities
交付时间 Delivery date	现房随时入驻 Ready to move in at anytime
交付状态 Ready to move in at anytime	室内网络地板 Indoor net floor
租赁面积 Rental area	300平米起分割 minimum 300 sqm

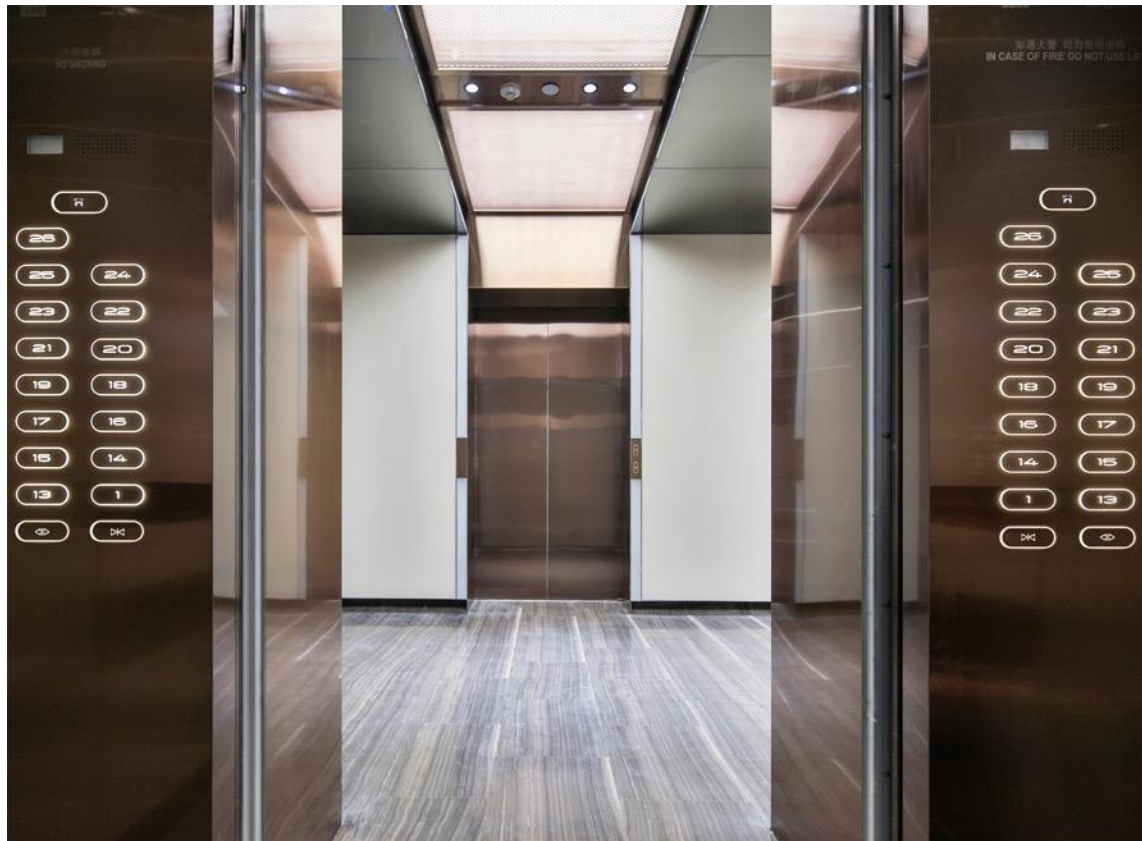
骏豪·中央公园广场 项目介绍

Smart Hero - Central Park Plaza Presentation



骏豪·中央公园广场 项目介绍

Smart Hero - Central Park Plaza Presentation



骏豪·中央公园广场 项目介绍

Smart Hero - Central Park Plaza Presentation



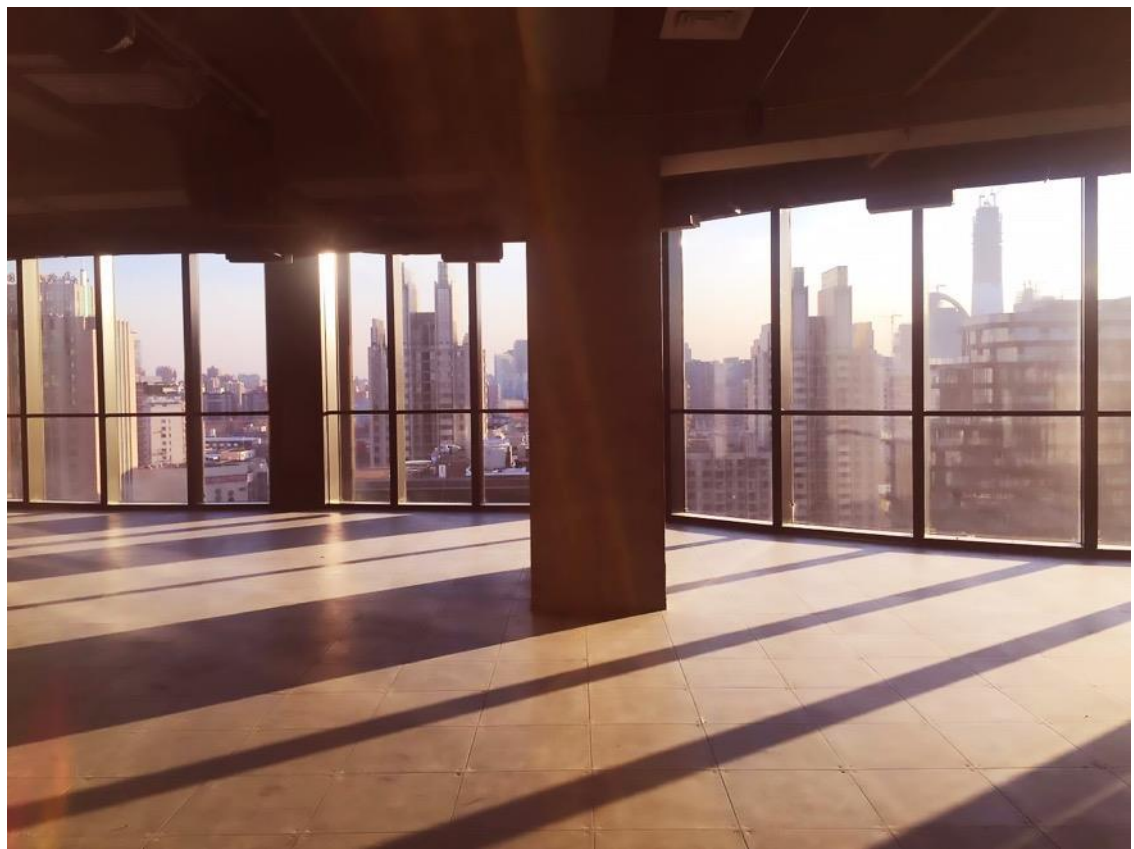
骏豪·中央公园广场 项目介绍

Smart Hero - Central Park Plaza Presentation



骏豪·中央公园广场 项目介绍

Smart Hero - Central Park Plaza Presentation

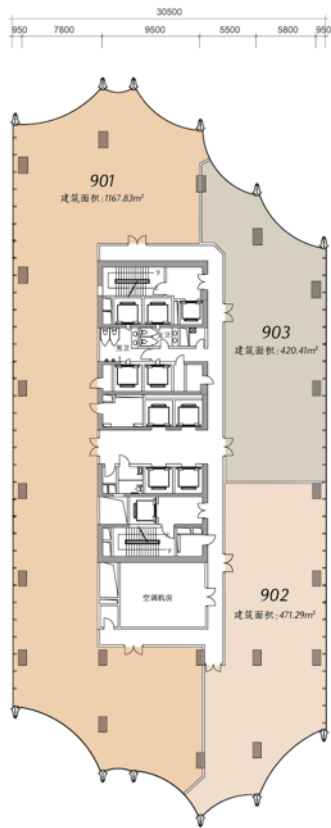


骏豪·中央公园广场
租赁信息推介

Smart Hero - Central Park Plaza Presentation

CENTRAL PARK
PLAZA
中央公园广场





A1 A2

9层户型图

Layout of floor 9



CP MALL

新贵 轻奢 慢生活

New noble, light luxury and slow life

总建筑面积约22300平方米

Total building area approx. 22300 sqm

全面服务写字楼客户

Full service for office building clients



阿玛尼城市公寓

Capital Residences by Armani/Casa

总建筑面积约22000平方米，仅56席
Total building area approx. 22000 sqm,
only 56 units

知名入驻客户

Well-known commercial tenants



安道麦公司 (ADAMA)

ADAMA Agricultural Solutions Ltd.



中國銀行

BANK OF CHINA



优翔 L'AVION

以全球医疗 保障私人健康



The World's Favourite
Belgian Chocolate



专业团队 顶级服务
Professional team, top service



敬献中国 致敬时代

Tribute to China and the Era



骏豪地產

SMART HERO
創造品位生活

A nighttime cityscape featuring illuminated skyscrapers and a river. The scene is overlaid with a complex geometric pattern of semi-transparent triangles in shades of yellow, green, and blue. The word "Thanks." is centered in a white, sans-serif font within a white rectangular border.

Thanks.



駿豪地產 | SMART HERO
創造 品位 生活